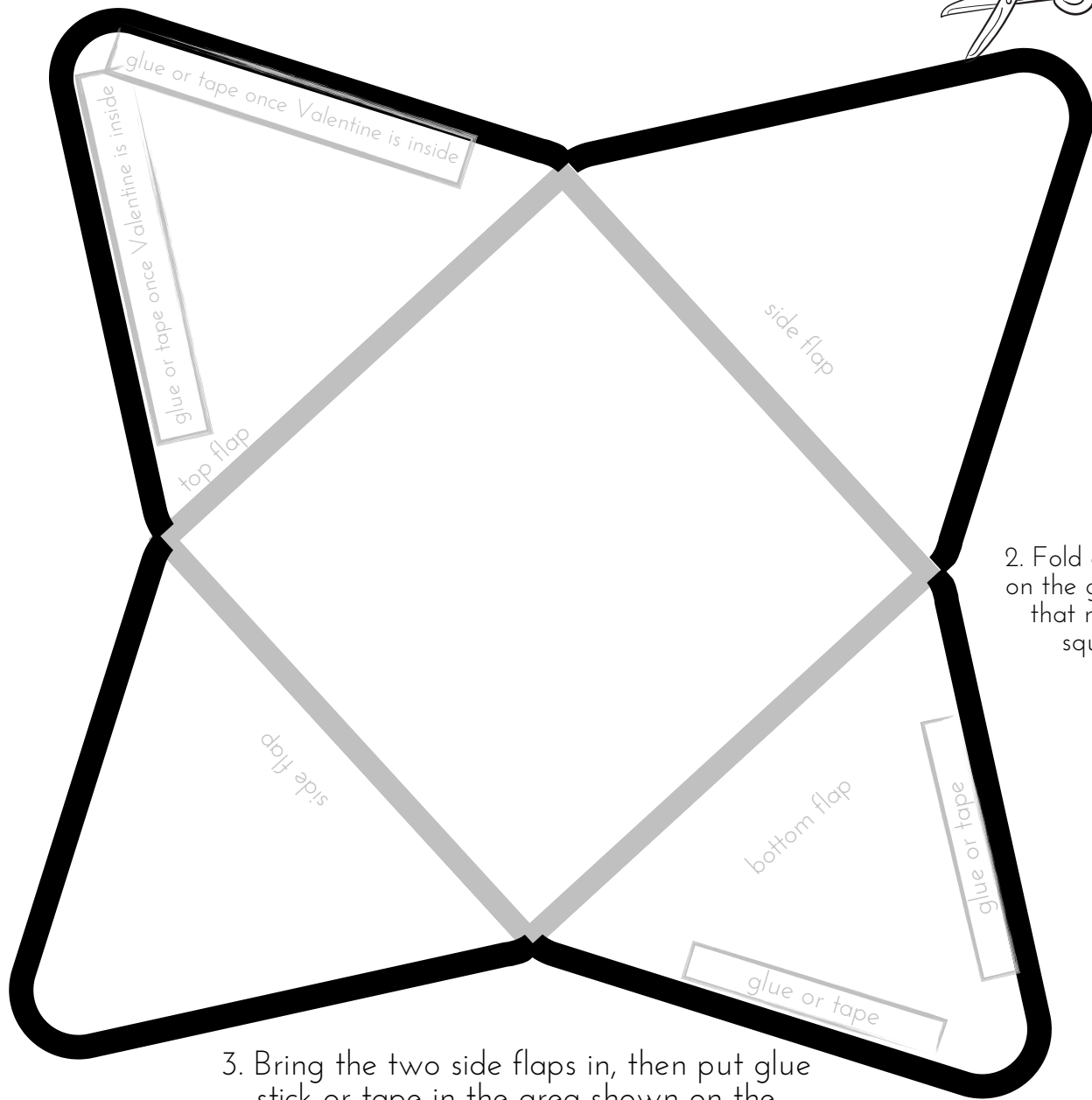


# Mini Envelope Template for Ocean Valentines

4. Slide the Valentine's card into the envelope, then glue or tape it closed.

START HERE  
1. Cut out the shape along the black lines.



2. Fold each flap on the gray lines that make a square

3. Bring the two side flaps in, then put glue stick or tape in the area shown on the bottom flap. Bring the bottom flap to meet the two side flaps and stick together.